



British Grove South, London, W4
Guide Price £825,000

WHITMAN & CO.

SALES · LETTINGS · COMMERCIAL



A well-presented two double bedroom Victorian terraced house, positioned just moments from the River Thames and the historic setting of Chiswick Mall. The property provides well-proportioned accommodation arranged over two principal floors. The ground floor features a generous open-plan reception and dining room with doors opening directly onto the sunny south west-facing rear garden, together with a fully fitted kitchen/breakfast room. Upstairs are two comfortable double bedrooms, including a principal bedroom with fitted wardrobes and en suite shower room, in addition to a separate family bathroom. A sizeable loft room above offers valuable additional space and further potential, subject to the usual consents. British Grove South is conveniently located for the amenities of Chiswick High Road. Transport links include Turnham Green and Stamford Brook tube stations, and straight forward access to the A4/M4 for routes in and out of London.



British Grove South, W4

Approximate gross internal area

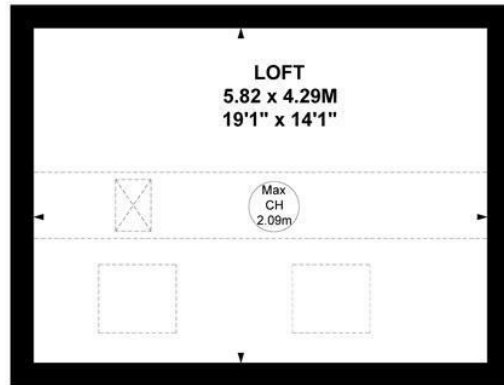
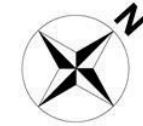
102.37 sq m / 1102 sq ft

(Including Loft)

Loft : 24.96 sq m / 269 sq ft

Key :

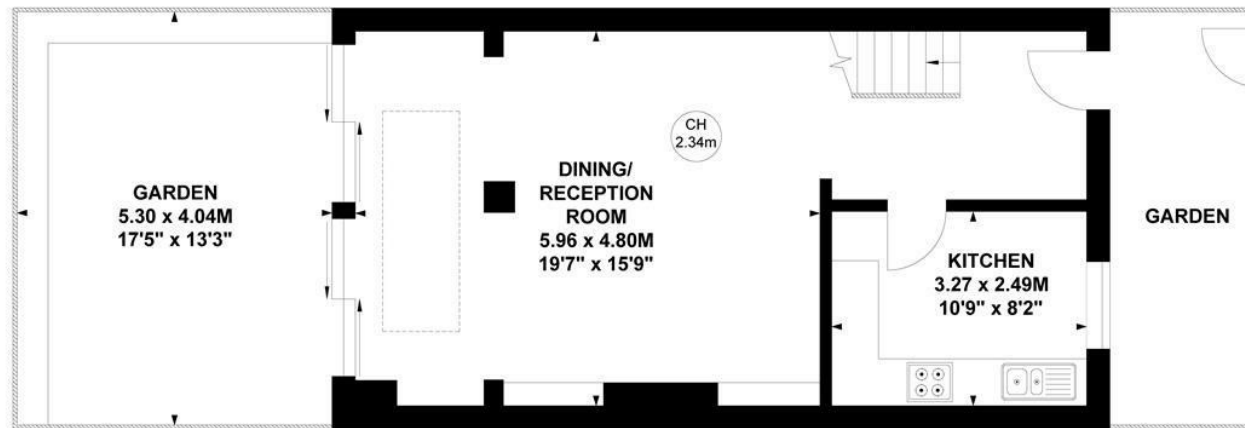
CH - Ceiling Height



Loft



First Floor



Ground Floor

Not to scale, for guidance only and must not be relied upon as a statement of fact.

All measurements and areas are approximate only

- Victorian terraced freehold cottage
- Loft room
- South west facing garden

- Two double bedrooms/two baths
- 19'7x15'9 Reception/dining room
- Close to The River and Chiswick High Road

Tenure - Freehold
Local Authority - Hounslow
Council Tax - Band E

